

SHELL-PAC

Maintenance Instructions



Important Notice:

Please follow the care guidelines to maintain your stand, maximise the life of your graphics and prevent any damage to the Shell-pac panels.

✓ Recycling Your Stand

Shellpac has been designed with the environment in mind. The entire system, including the box can be recycled.

This can be done by placing the box in a cardboard recycling container or by sending it back to Clip Ltd who will dispose of the pack free of charge in an environmentally friendly way.

✓ Cleaning

To remove dust from your graphics use a slightly damp clean cloth.

✓ Dismantling

To dismantal the Shell-pac system gently lever each panel away from the shell scheme.

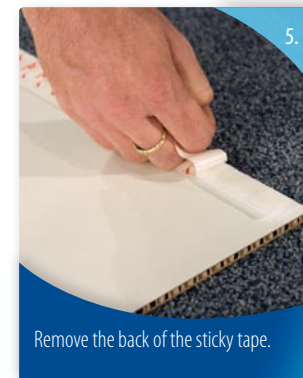
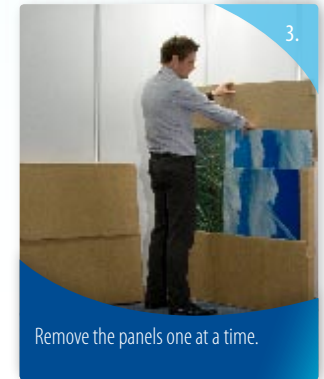
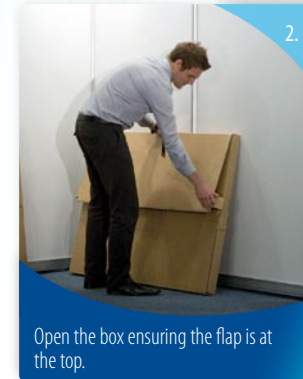
You may find that the velcro remains on the shell scheme wall, if this is the case please remove. Clip will not be held responsible for cleaning the shell scheme if any tape has been left.

The tape that fits onto the wall of the shell scheme can be disposed of as this is one use.

If you wish to re-use your Shell-pac panels new tape can be applied by cutting the required length and attaching to the velcro on the panels.

SHELL-PAC

Assembly Instructions



IMPORTANT: You must remove the tape from the shell scheme to avoid being charged for cleaning.

IMPORTANT: You must remove the tape from the shell scheme to avoid being charged for cleaning.