

Le Kit Mini Standard

## Set all artwork @ 25% with a 3mm bleed

QuarkXpress files are preferred. InDesign, Illustrator, Freehand and Photoshop can also be used. All set up as CMYK. Please note, **we do NOT print from PDF.**

Be sure to include all source files, graphics and fonts (as well as those in any supporting EPS files) with your job, using Collect for Output or Preflight.

**Overprint Fill / Stroke must NOT be selected on any artwork.**

Please provide a hard copy printed colour proof with your files for our reference. Where accurate colour matching is required, you must supply Pantone or printed references. We will match this as closely as possible but cannot guarantee an exact match.

**Below is a brief a/w summary, but for more indepth information on setting up artwork please read our a/w explanation pdf.**



### Fonts

- Illustrator and/or Freehand files must be supplied with text converted to outlines, along with an editable text version and all necessary fonts in case changes are necessary.
- Any language fonts other than English must be converted to outlines.

### Photoshop files

- Must be CMYK - please convert any Index, Duotone, RGB or Pantone images, and do not use extra channels.
- Files must be placed into your 1/4 size document at no more than 100% @ 300 dpi.
- Save all images as EPS (encoding JPEG Maximum quality).

### Vector files

- Must be CMYK
- All logos should be vector files created in Illustrator or Freehand, with Attributes set to 2400 dpi.

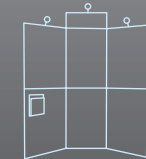
Document should be set up for largest panels (centre) using guides (red) to indicate smaller side panels

For graphics that run from one panel to the next for a seamless image you need to include pole coverage, see page 2.

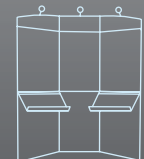
Set All Artwork @ 25%

Header Panel @ 25%: 156.25 x 62.5mm  
Full size: 625 x 250mm

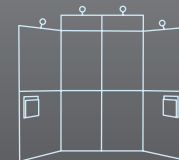
Front Main Panel @ 25%: 156.25 x 250mm  
Full size: 625 x 1000mm



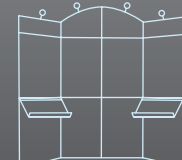
Le Kit Mini Standard



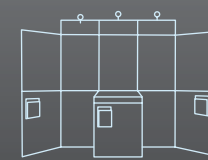
Le Kit Mini De-Luxe



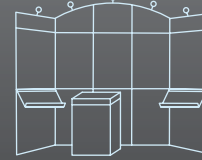
Le Kit Midi Standard



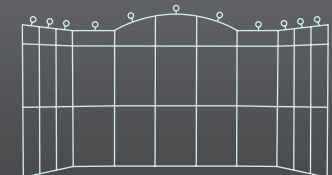
Le Kit Midi De-Luxe



Le Kit Maxi Standard



Le Kit Maxi De-Luxe



Le Kit Expo

All artwork should be labelled with your company name / order number and supplied with our Artwork Details form to:

**Graphics Department.**  
Clip Ltd, Church Road, Wick,  
Bristol BS30 5RD. UK.

**isdn.** +44 (0) 117 937 2807  
**ftp.** telephone graphics on  
0117 937 5700 for details

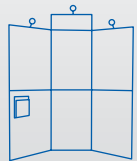
**t.** +44 (0) 117 937 5700  
**f.** +44 (0) 117 937 3172

**e.** info@clipdisplay.com  
**w.** www.clipdisplay.com

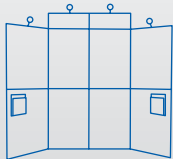
# lekit pole coverage

Each angled panel has a different pole coverage.

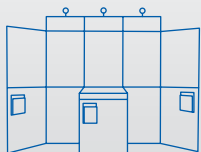
Pole coverage amounts (mm) shown below within the blue circles.



Le Kit Mini



Le Kit Midi



Le Kit Maxi



## Set all artwork @ 25% with a 3mm bleed

QuarkXpress files are preferred. InDesign, Illustrator, Freehand and Photoshop can also be used. All set up as CMYK. Please note, we do NOT print from PDF.

Be sure to include all source files, graphics and fonts (as well as those in any supporting EPS files) with your job, using Collect for Output or Preflight.

**Overprint Fill / Stroke must NOT be selected on any artwork.**

Please provide a hard copy printed colour proof with your files for our reference. Where accurate colour matching is required, you must supply Pantone or printed references. We will match this as closely as possible but cannot guarantee an exact match.

**Below is a brief a/w summary, but for more indepth information on setting up artwork please read our a/w explanation pdf.**



### Fonts

- Illustrator and/or Freehand files must be supplied with text converted to outlines, along with an editable text version and all necessary fonts in case changes are necessary.
- Any language fonts other than English must be converted to outlines.

### Photoshop files

- Must be CMYK - please convert any Index, Duotone, RGB or Pantone images, and do not use extra channels.
- Files must be placed into your 1/4 size document at no more than 100% @ 300 dpi.
- Save all images as EPS (encoding JPEG Maximum quality).

### Vector files

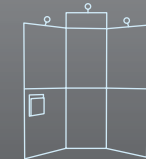
- Must be CMYK
- All logos should be vector files created in Illustrator or Freehand, with Attributes set to 2400 dpi.

## techspec

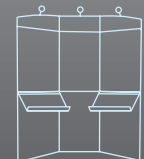
Set All Artwork @ 25%

Header Panel @ 25%: 156.25 x 62.5mm  
Full size: 625 x 250mm

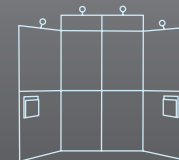
Front Main Panel @ 25%: 156.25 x 250mm  
Full size: 625 x 1000mm



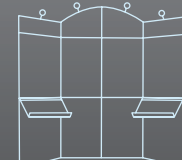
Le Kit Mini Standard



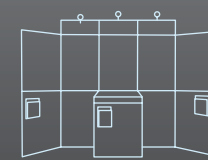
Le Kit Mini De-Luxe



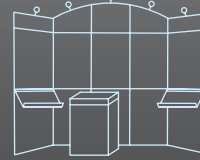
Le Kit Midi Standard



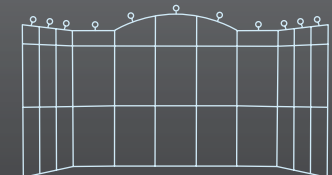
Le Kit Midi De-Luxe



Le Kit Maxi Standard



Le Kit Maxi De-Luxe



Le Kit Expo

All artwork should be labelled with your company name / order number and supplied with our Artwork Details form to:

### Graphics Department.

Clip Ltd, Church Road, Wick,  
Bristol BS30 5RD. UK.

isdn. +44 (0) 117 937 2807

ftp. telephone graphics on  
0117 937 5700 for details

t. +44 (0) 117 937 5700

f. +44 (0) 117 937 3172

e. info@clipdisplay.com

w. www.clipdisplay.com

